



SCHOOLS AND PROGRAMS

A Note from the Director : Research conducted by Harvard’s Center of the Developing Child (2015) found children with at least one stable and committed relationship with a supportive adult had significantly better outcomes than children without such support. Children with mentor support are more likely to complete tasks, remain calm in the face of challenges, and try new things. These children are also less likely to experience depression or engage in aggressive behavior. What does this research mean? It means we can all make a difference in a child’s life by taking an interest in things children care about and engaging with children in a way that communicates they matter. It is one simple way to change the future. It only takes one caring adult. Let it be you.

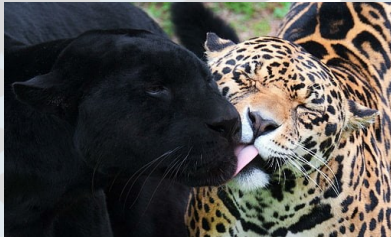
CELEBRATIONS

Highest Student Attendance

The highest percentage of student attendance for February goes to Classroom #6, our post-secondary classroom headed by Janet Tito. This group of students achieved 94.% attendance!

These students are getting ready for the world of adulthood.

Way to go Jaguars!



IMPORTANT:

Please check your student’s backpacks this month for important communication from your student’s teacher.

Be on the lookout for:

- Daily Communication Logs
- IEP Progress Reports
- Other important messages

NEW FACES on Campus

Please help us welcome our talented new staff:

- Aajon Patterson-AI-1
- Erica Harvitt-Occupational Therapist

Saying Goodbye

Thank you for your dedication and service to our students and our school!

- Akealla Knighten-Behavior Specialist
- Frehiwot Gezahegn-Teacher Room #8

DATES TO REMEMBER:

EARLY Dismissal 12:40PM

Wednesday March 8

No SCHOOL

Spring Break

March 20th to March 24