

# School Accountability Report Card Reported for School Year 2016-17

*Published During 2017-18*



## **SPECTRUM CENTER – Chino Valley Campus**

15650 Pipeline Avenue

Chino Hills, CA. 91709

Phone: 909-628-1201 ext. 5343 Fax: 909-586-3116

Program Director: Danielle Frey Email: [dfrey@spectrumschools.com](mailto:dfrey@spectrumschools.com)

CDS Code: 36-67678-0125104

## **I. Data and Access**

Spectrum Center Schools SARC reports are available on our web site at: [spectrumschools.com](http://spectrumschools.com)

## **II. About This School**

### **School Description and Mission Statement**

#### **About this school:**

Spectrum Center Schools have been serving special needs students with since 1975. We are a California Department of Education certified nonpublic school program.

The Spectrum Center Chino Valley Campus program is designed for student's grade 7- 12+ who exhibit challenging behavioral, social and academic special education needs. Student population represents a wide array of disabilities. The school has 60 students served in 5 classrooms with a credentialed Special Education teacher and specially trained paraprofessionals.

The school provides a menu of education and related services in the areas of academics, independent living, community integration, recreation/leisure, and vocational training. Communication is addressed across all skill domains. Students also learn social interaction skills across all activities.

Our behavior analytic, data-based approach evaluates curricular, environment, intra-personal and interpersonal variables in designing non-aversive behavior programs to teach pro-social behaviors. Some of our standard evidenced based practices include:

- Applied Behavioral Analysis
  - Functional Analysis
  - Positive Behavior Intervention Plans
  - Positive Behavioral Supports
- Curriculum and Instruction
  - State Standards Implementation
  - Direct Instruction
  - Computer Assisted Technology
  - Discrete Trial Training
- Ongoing Progress Monitoring
  - Curriculum Based Measurements
  - Content based Assessments
  - Standardized Assessments

Data is collected on academic achievement and on each Individualized Educational Plan (IEP) goal weekly. The data is reviewed monthly to assess the student's progress. Lessons plans are revised as needed to assure student learning. A progress report and/or report card is completed for every student and is provided to both the parent and LEA quarterly per the IEP and master contract.

Spectrum Center Schools monitor progress on targeted campus goals quarterly. An Internal Accountability Review is conducted annually.

**Mission Statement:**

Our mission is to provide personalized, evidence-based educational services for non-traditional learners in collaboration with families and public school districts.

**Opportunities for Parental Involvement**

Parents are involved in the student enrollment process, parent/teacher conferences, IEP development and approval.

There are opportunities for parents to attend school events such as, open house, talent show, and parent teacher conference. These events give parents/care-providers the opportunity to see what their children are learning and how much they are working on building their social skills. Parents/care-providers also have the opportunity to meet other parents/care-providers, which can help with finding out resources for their children and themselves.

Teachers communicate with parents on a daily or weekly basis to touch base and share how the child's day/week went as well as ask for parent input.

When needed, Spectrum Center has provided trainings to help parents with challenges at home, such as ABA principles, video modeling for those with Autism, as well as other training.

Parents will also have the opportunity to participate in the Western Association of Schools and Colleges (WASC) self-study accreditation process. We will seek their assistance to evaluate specific areas of our program through surveys, interviews and group meetings.

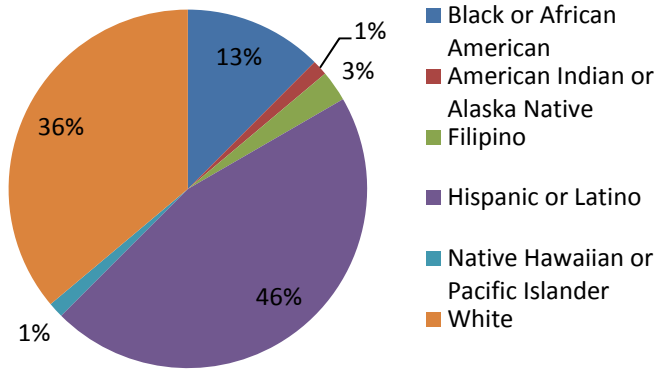
**Student Enrollment by Grade Level (School Year 2016-17)**

This table displays the number of students enrolled in each grade level (determined by age) at the school.

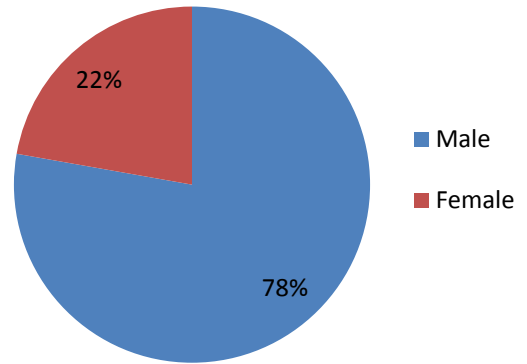
<b>Grade Level</b>	<b>Number of Students</b>	<b>Grade Level</b>	<b>Number of Students</b>
<b>Kindergarten</b>	0	<b>Ungraded Elementary</b>	0
<b>Grade 1</b>	0	<b>Grade 9</b>	3
<b>Grade 2</b>	0	<b>Grade 10</b>	5
<b>Grade 3</b>	0	<b>Grade 11</b>	18
<b>Grade 4</b>	0	<b>Grade 12</b>	13
<b>Grade 5</b>	0	<b>Ungraded HS</b>	0
<b>Grade 6</b>	0	<b>Post-Secondary</b>	32
<b>Grade 7</b>	0		
<b>Grade 8</b>	1	<b>Total Enrollment</b>	72

# Student Enrollment by Group

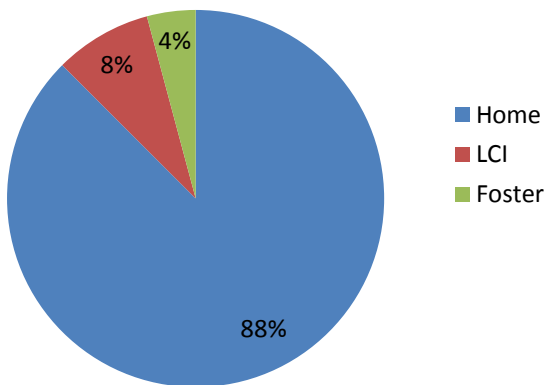
## Diverstiy



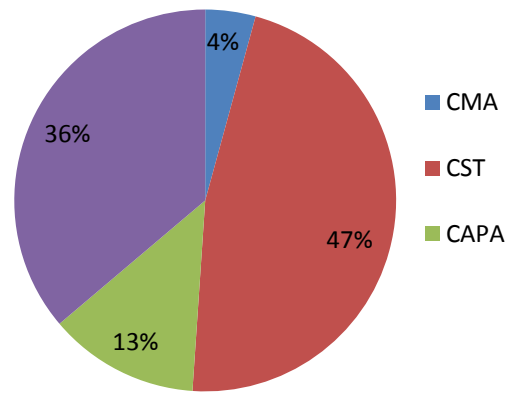
## Gender



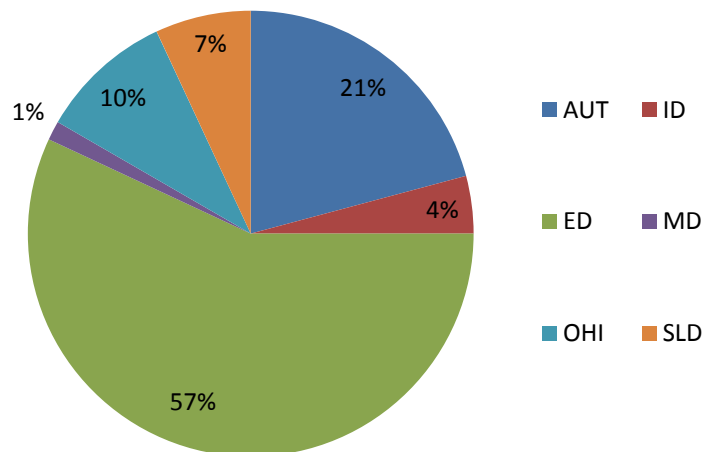
## Residence



## STAR



## Disability Eligibility



## Average Class Size

Our model is to provide small classroom sizes; our classrooms can accommodate up to 12 students per classroom. Students are in classrooms according to grade, academic and function level. In the 2016-17 school years, the Spectrum Chino Valley Campus served an average of 60 students in 5 classrooms.

## III. School Climate

### School Safety Plan (School Year 2016-17)

All staff receives required trainings including, but not limited to: 1<sup>st</sup> Aide/CPR, Hughes Bill, incident report writing, emergency preparedness, blood borne pathogens, student supervision, safety in the work place, sexual harassment, abuse reporting and universal precautions.

The campus Administration is responsible for monitoring monthly classroom safety and risk abatement checklist, maintaining adequate first aide and blood borne pathogen supplies and reviewing safety incidents as needed.

Morning sweeps of the grounds are conducted by the Administration to insure the campus is secure and free from dangerous debris.

Chino Valley Campus has a system of training and drills to address the need for safety should disaster strike the campus during business hours.

1. The Administration conducts monthly fire drills with staff and students.
2. Duck and Cover drills are coordinated by the Administration and are implemented once a month with students.
3. Emergency Preparedness Training takes place annually. The training consists of earthquake building damage disaster, shelter in place and violent intruder protection.

An emergency preparedness drill is conducted annually with staff to practice what is covered in the Emergency Preparedness Training.

Emergency preparedness includes monthly fire drills, monthly earthquake drills, monthly OSHA building checks, an annual fire inspection and an annual disaster drill which includes earthquake preparedness, shelter in place, violent intruder protection and an annual exposure control plan.

## Suspensions and Expulsions

Rate	School		
	2014-15	2015-16	2016-17
Suspensions	0	0	1
Expulsions	0	0	0

## IV. School Facilities

### School Facility Conditions and Improvement Plan (School Year 2017-18)

The Spectrum Center Chino Valley Campus is located on site at the Chino Valley Alternative Education Center, located at 15650 Pipeline Avenue, Chino Hills, CA. The school opened at this site in 2012. The school area of the building has 6 classrooms and administrative offices.

**Maintenance and Repair:**

The Administration is responsible for all campus repairs and coordinates with the District Maintenance Specialist to ensure repairs are completed.

**Cleaning Process and Schedule:**

Our campus contracts with a cleaning service company in order to ensure that all classrooms, offices, cafeteria, and restrooms are cleaned on a daily basis.

**Modernizing or New School Construction Projects:** NA

**School Facility Good Repair Status (School Year 2017-18)**

System Inspected	Repair Status				Repair Needed and Action Taken or Planned
	Exemplary	Good	Fair	Poor	
<b>Systems:</b> Gas Leaks, Mechanical/HVAC, Sewer		*			n/a
<b>Interior:</b> Interior Surfaces		*			n/a
<b>Cleanliness:</b> Overall Cleanliness, Pest/Vermin Infestation		*			n/a
<b>Electrical:</b> Electrical		*			n/a
<b>Restrooms/Fountains:</b> Restrooms, Sinks/Fountains		*			n/a
<b>Safety:</b> Fire Safety, Hazardous Materials		*			n/a
<b>Structural:</b> Structural Damage, Roofs		*			n/a
<b>External:</b> Playground/School Grounds, Windows/Doors/Gates/Fences		*			n/a
<b>Overall Rating</b>		*			n/a

**V. Teachers****Teacher Credentials**

Teachers	School		
	2014-15	2015-16	2016-17
<b>Number of campus classrooms</b>	<b>4</b>	<b>5</b>	<b>5</b>
<b>Clear Level 2</b>	2	2	2
<b>Preliminary Level 1</b>	1	2	2
<b>UIP</b>	1	1	2
<b>PIP/STSP</b>	0	0	0
<b>Emergency Substitute (Classroom Aides)</b>	2	2	3

## VI. Support Staff

### Other Support Staff (School Year 2016-17)

Title	Number of FTE Assigned to School
Senior Behavior Analyst	1
Curriculum and Instruction Specialist	1
Education Coordinator	0
Therapists	2
Speech/Language/Hearing Specialist	1
Occupational Therapists	2
Adapted Physical Education	1
Transportation Support	0
Behavioral/Instructional Classroom Aides	9

## VII. Curriculum and Instructional Materials

### Instructional Materials (School Year 2017-18)

Each student at CST and CMA level has a text book which matches the SBE or the local LEA's adapted text books in each academic area at his/her grade level. In addition Spectrum Center provides supplemental materials as appropriate to match the students' learning patterns.

Core Curriculum Area	Quality, Currency, and Availability of Textbooks and Instructional Materials * Need to import the campus' Materials form	Percent of Pupils Who Lack Their Own Assigned Textbooks and/or Instructional Materials	Most Recent SBE or Local Governing Agency Approved Textbooks and Instructional Materials
Reading/Language Arts	*	0%	yes
Mathematics	*	0%	yes
Science	*	0%	yes
History-Social Science	*	0%	yes
Foreign Language	*	0%	yes
Health	*	0%	yes
Visual and Performing Arts	*	0%	yes

## VIII. School Finances

### Expenditures per Pupil (Fiscal Year 2016-17)

Total Dollars	Dollars per student	Average Teacher Salary
\$550,225	\$22,926	\$59,639

### Types of Services Provided

Spectrum Center Schools works cooperatively with local school districts to develop a customized curriculum for each student based on the student's Individual Education Program (IEP), abilities, interests and goals. The Spectrum Center Schools meet state education standards and are based on the principals of Applied Behavior Analysis (ABA). ABA is a discipline devoted to the understanding and improvement of human behavior. Spectrum's ABA curriculum includes specific strategies for preventing behaviors of concern, teaching alternative appropriate behavior, teaching self-control strategies, improving learning skills and responding to behaviors of concern in a safe and respectful manner.

Spectrum Center Schools serve students with emotional disturbance or developmental disabilities who benefit from a consistent and structured program, with an emphasis on a successful transition to a less restrictive environment. The students receive individualized instruction in academic, social and behavioral skills, including independent living and vocational skills in a low student to instructor ratio.

Spectrum Center Schools also serve students with autism, who receive a continuum of specialized education services in dedicated classrooms. Applied Behavior Analysis is the foundation of Spectrum's approach to teaching children with autism in an environment that is predictable, consistent, structured and positive. Spectrum's curriculum for students with autism in highly structured involves repeated presentation of instruction and focuses on communication, behavior, social and academic skills in a low student to instructor ratio.

Therapy related services are provided by Spectrum Chino Valley Campus per the students Individual Education Program and all other services Speech and Language Therapy, Occupational Therapy, Adapted Physical Education, and Assistive Technology are provided by the District.

### Teacher and Administrative Salaries (Fiscal Year 2016-17)

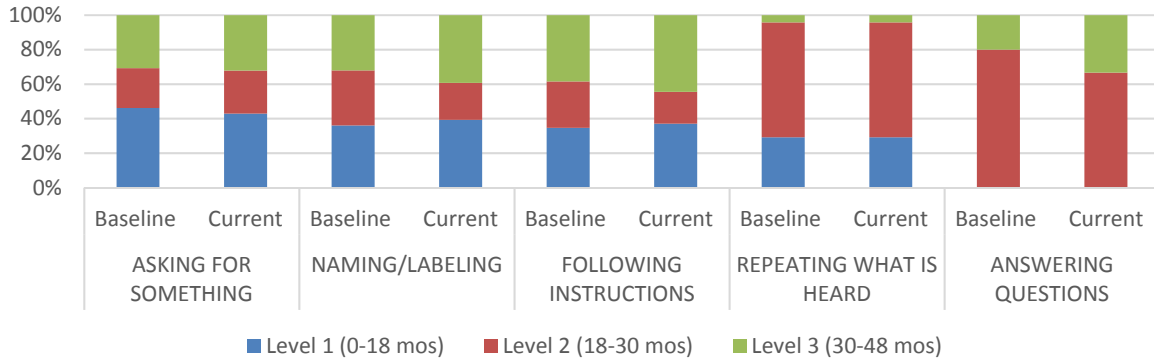
Category	Spectrum Schools Amount	State Average (ADA <1,500)
Beginning Teacher Salary	51,000	\$40,329
Mid-Range Teacher Salary	60,400	\$59,804
Highest Teacher Salary	70,300	\$79,279
Average Director Salary	84,706	\$91,712

# IX. Student Performance

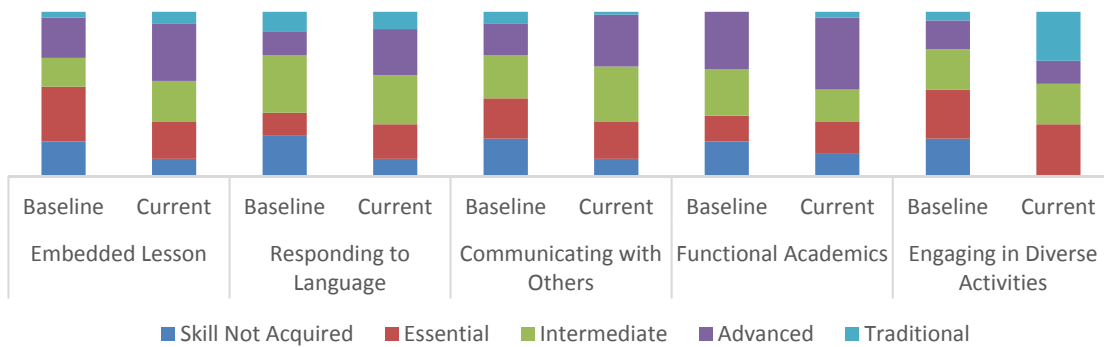
## Standardized Testing and Reporting

Our goal is to help students earn required credits and acquire necessary skills for success — now and in the future. The below charts represent overall student growth Spectrum wide.

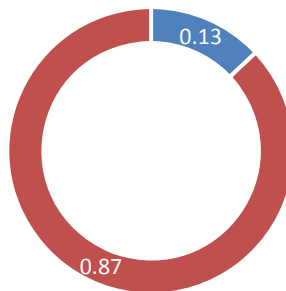
VB Mapp



LINKS



Essential for Living



■ Total No. of Targeted Skills    ■ Total No. of Targeted Skills at Independence

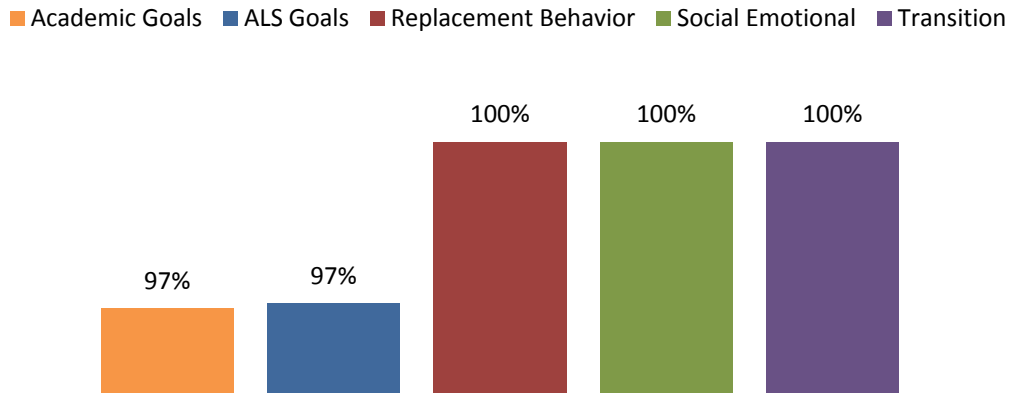


## Other Student Outcome Data

### Individualized Education Program (IEP)

All students enrolled at Spectrum are given an individualized program that is tailored to their unique skill levels and ensures that the accommodations necessary for their success are provided. Individualized Education Program (IEP) goals are written to target specific deficit areas based on present levels of performance.

Spectrum measures progress toward completion of IEP goals and defines significant progress as meeting at least three out of four benchmarks in the chart below



## X. Accountability

### California Department of Education Certification (CDE)

The Spectrum Center Schools are all certified by the California Department of Education.

### Schools Commission of the Western Association of Schools and Colleges Accreditation (WASC)

The Spectrum Center Schools are all fully accredited by the Schools Commission of the Western Association of Schools and Colleges.

### Academic Performance Index (API)

The API is not applicable to Non Public Schools.

## XI. Postsecondary Preparation

### Completion of High School Graduation Requirements

Data is not shown when the number of students with data is ten or less to protect student privacy.

## XII. Instructional Planning and Scheduling

Spectrum Center Chino Valley Campus offers teaching staff receive a stipend every year in order to help continue their education and other teaching staff have access Spectrum Center scholarships. All staff are required to complete a one-month training CD called BEST, which encompasses our Mission Statement, philosophies of teaching, strategies for supervision, ABA principles, data taking and safety in the classroom.

All of our staff are required to attend a three day training called Pro-ACT. This gives them the opportunity to learn positive behavioral management. Throughout the school year teaching staff receive trainings, when appropriate, in using Boardmaker, PECS, TEACCH, Token Economy Systems, and social skills strategies. Before the beginning of each school year, three to five days are designated as teacher training days. Staff receive the required trainings, such as: CPR, 1st aid, Hughes Bill, Incident Report writing, Emergency Preparedness, Bloodborne Pathogens, Student Supervision, FMLA/ Safety in the Workplace, and Universal Precautions. Spectrum Center Schools provide continual training as well as dedicated staff training days.

## **Teacher Training**

Sample Teacher Trainings:

Improving Student outcomes through Data-based Decisions -

- Teaching Plans

- Goal Writing

- Data Systems

- Graphing & Data Analysis

- Ensuring Proper Implementation of Teaching Plans by Classroom Staff

Direct Instruction –

- Corrective Reading Decoding & Comprehension

- Expressive Writing, I & II

## **Staff Training**

All Staff are trained in:

Nonviolent Crisis Intervention: CPI

Behavior and Education Staff

- Understanding the needs of the student

- Positive Behavioral Support Program

- Communication

- Teaching Strategies

- Data Collection

- Reducing Challenging Behaviors

- Safety